

Key Vocabulary

12-hour time

24-hour time

Roman numerals

analogue

digital

hours

minutes

seconds

o'clock

half past

quarter past

quarter to

midday

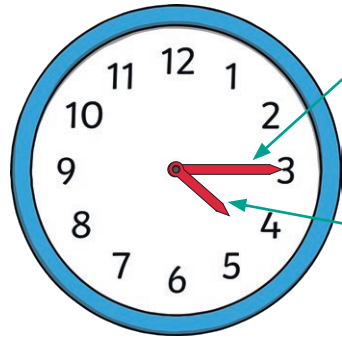
midnight

noon

a.m.

p.m.

Analogue and Digital Clocks

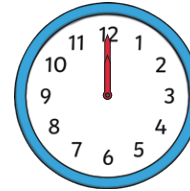


**Minute Hand**

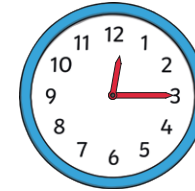
The long hand points to the minutes past the hour.

**Hour Hand**

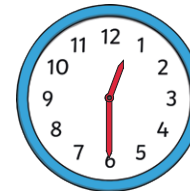
The short hand points to the hour. If this hand is pointing between the hours, it is the earlier hour of the two.



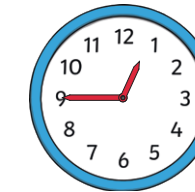
twelve o'clock



quarter past twelve

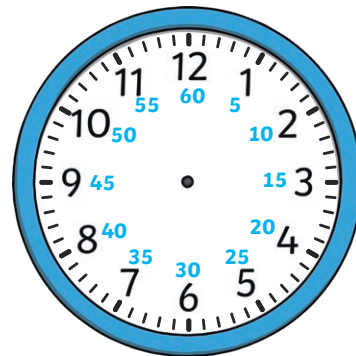


half past twelve



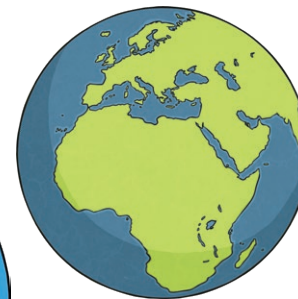
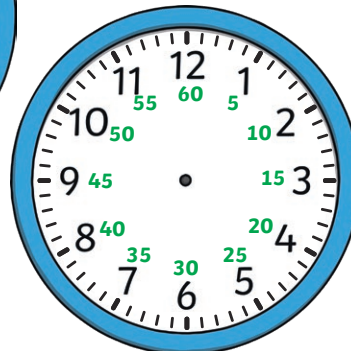
quarter to one

Durations of Time



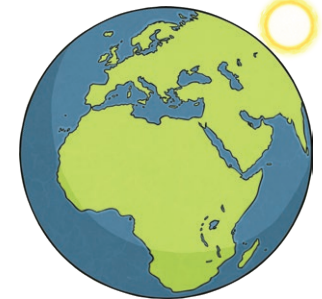
There are **60 seconds** in an minute.

There are **60 minutes** in an hour.



There are **24 hours** in a day

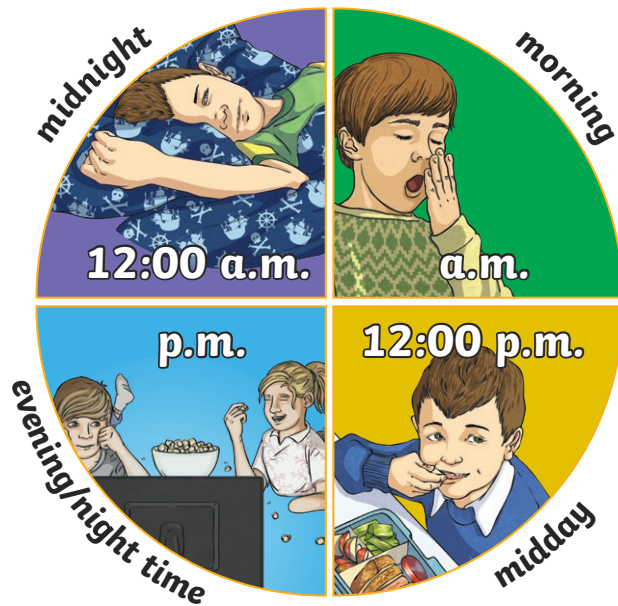
There are **7 days** in a week.



There are **12 months** in a year.

24-Hour Time

There are 24 hours  
in a day.



	01:00	1 a.m.	1 o'clock	
	02:00	2 a.m.	2 o'clock	
	03:00	3 a.m.	3 o'clock	
	04:00	4 a.m.	4 o'clock	
	05:00	5 a.m.	5 o'clock	
	06:00	6 a.m.	6 o'clock	
	07:00	7 a.m.	7 o'clock	
	08:00	8 a.m.	8 o'clock	
	09:00	9 a.m.	9 o'clock	
	10:00	10 a.m.	10 o'clock	
	11:00	11 a.m.	11 o'clock	
	12:00	12 p.m.	12 o'clock	

	13:00	1 p.m.	1 o'clock	
	14:00	2 p.m.	2 o'clock	
	15:00	3 p.m.	3 o'clock	
	16:00	4 p.m.	4 o'clock	
	17:00	5 p.m.	5 o'clock	
	18:00	6 p.m.	6 o'clock	
	19:00	7 p.m.	7 o'clock	
	20:00	8 p.m.	8 o'clock	
	21:00	9 p.m.	9 o'clock	
	22:00	10 p.m.	10 o'clock	
	23:00	11 p.m.	11 o'clock	
	00:00	12 a.m.	12 o'clock	