

# St. Francis Church of England Primary School



## School Newsletter 19.02.24

### School Contact Details:

Address: Cherry Tree Lane, Cherry Tree, Blackburn, BB2 5NX

Telephone: 01254 201419

Email: office@stfrancis.blackburn.sch.uk

Website: www.stfranciscep.co.uk

Facebook: @stfrancisceprimary

**School Vision:** As a church school, we aspire to live life in all its fullness; Loving Faith. Loving People. Loving Learning. - following the footsteps of Jesus.

*'I have come to give you life in all its fullness.'* John 10:10

**School Values:** love, joy, peace, patience, kindness, goodness, faithfulness, gentleness and self-control.

### Collective Worship - Our thinking!

This half-term, we are focusing on the value of 'FORGIVENESS'.

The children did well at remembering our past focus values and elements from the acrostic poems.

Children considered what forgiveness means. We talked about the meaning of 'sorry' within their comments. We said that 'sorry' has two meanings. The first is that we are sorry for what happened and checking that person is OK and the second is a promise that it will not happen again.

We talked about how we can forgive someone but still have boundaries of what is OK and not OK.

We explored the Christian meaning of forgiveness and how the Bible tells us that Jesus died to make us clean – to forgive us of our sins and allow us to have a relationship with God.

### Talk to your child(ren) about...

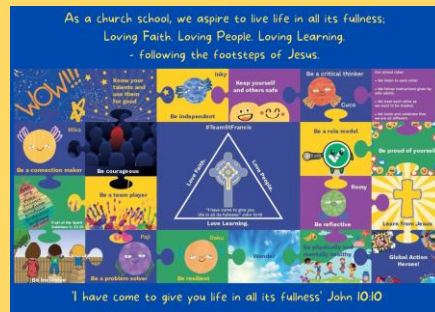
What does forgiveness mean?

Is forgiveness a good or bad thing? Why?

Can you think of a time when someone has forgiven you?

Can you think of a time when you have forgiven someone else?

How can you live a fulfilling life this week?



### Picture News (Link to Website)



Why is this important?

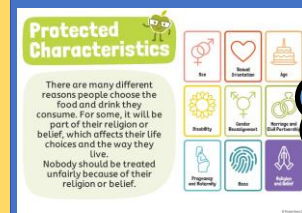
What choices do you make?



### Individual Liberty

We have opportunities to choose our food and drink. It is important to consider how these choices may impact things such as our health, the environment or our beliefs.

[Click here for more information about British Values.](#)



### Upcoming Dates....

Friday 23 <sup>rd</sup> February	09:00-10:00	Parent/Carer Coffee Morning	Whole School
Friday 23 <sup>rd</sup> February	18:00-19:00	PTA KS1 School Disco	EYFS, Year1 and Year2
Friday 23 <sup>rd</sup> February	19:15-20:15	PTA KS2 School Disco	Year3, Year4, Year5 and Year6
Monday 26 <sup>th</sup> February	15:30-16:30	FUNDA Athletics Club starts - first of 5 weeks	Year6
Tuesday 27 <sup>th</sup> February	15:30-16:30	FUNDA Multi-Sport starts - first of 5 weeks	Year1
Tuesday 27 <sup>th</sup> February	15:30-16:30	Mr and Mrs Carter's - Where in the World Club starts - first of 5 weeks	Year2
Tuesday 27 <sup>th</sup> February	15:30-16:30	Miss Kearney's EYFS/Year 6 Buddy Club starts - first of 5 weeks	EYFS and Year6
Wednesday 28 <sup>th</sup> February	14:45-15:25	Cherry Tree Library Visit	Year1
Thursday 29 <sup>th</sup> February	14:30-15:30	Parent/Carer Lesson Visit Practical Maths	Year1
Thursday 29 <sup>th</sup> February	15:30-16:30	FUNDA Multi-Sport club starts- first of 5 weeks	Year2

Please check your ParentPay balances and clear them.

Would your child like to learn a musical instrument?

You can book your child's music lessons on-line at [www.gmmusicclub.co.uk/bolton](http://www.gmmusicclub.co.uk/bolton)

Lessons with specialist teachers are offered in strings, brass, woodwind, drum kit, guitar, ukulele, piano, keyboard and singing.

**Book now to reserve your place**

If you would like to join any of our bands, orchestras or choirs please ring 01204 939333

Click [here](#) to download the complete Spring Term dates. Summer term dates are also available and have been attached to the email with this newsletter.

### Some Key Website Links

[Term Dates / PE Days / Curriculum information / How to contact us / Breakfast Club / After School Club / Policies / Parent/Carer Partnership Dates](#)

### Parent/Carer Partnership

As we have come to finalise the Summer Term date list, we have been reviewing attendance at the different events we have put on. Events like the nativity or other performances seem to have been well attended, however, the lesson visits have had minimal attendance. We have created a Parent/Carer partnership evaluation form so you can tell us why coming to see your children's learning is not appealing. Please complete the evaluation form by clicking [here](#).

### Blackburn with Darwen Family Hub Parenting Courses

I recently met with a Family Hub lead who explained the different parenting courses available. I have put some information on our website about their different courses – click [here](#).

**PTA – Discos:** This FRIDAY is disco night! Infants: 6-7pm / Juniors: 7:15-8:15pm. Please pay via ParentPay.

**Crossing Patrol – Preston Old Road:** If you have not done so already, please continue to share and sign the [electronic form](#) regarding the lack of school crossing.

**Staff News:** Miss Ryding has had a medical diagnosis that requires time away from work for treatment. I know you will join with me as we send much love and prayers at this time. We will miss you while you are away and cannot wait for you to be back with us!